

# TAPAS



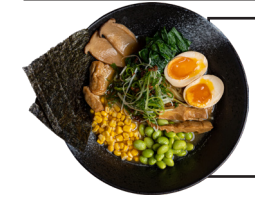
- Mini Springrolls** <sup>ACF</sup> 4.5 €  
(6pcs) veggie springrolls
- Veggie or Chicken Gyoza** <sup>AFNT</sup> 5.5 €  
(5pcs) jap. dumplings with chicken or veggie
- Ginger Tori Karaage** <sup>AFU</sup> 6.8 €  
(5pcs) knusprig mariniertes Hühnchen mit Mayo  
crispy chicken with mayo
- Takoyaki** <sup>AFRT</sup> 6.9 €  
(4pcs) Japanische Teigkugel mit Oktopus  
jap. dough ball with octopus
- Ebi Tempura** <sup>AB</sup> 5.5 €  
(3pcs) Frittierte Garnelen mit Spicy Mayo  
fried shrimp with spicy mayo
- Korokke** <sup>AFU</sup> 5.5 €  
(2pcs) Kürbispuffer mit Okonomi Sauce  
pumpkin croquettes with okonomi sauce
- Miso Suppe** <sup>F</sup> 4.0 €  
tofu I seaweed I spring onion



# RAMEN



- Shiro-Tori Ramen** <sup>ACDFT</sup> 13.8 €  
Hühnerbrust I Ei I Bambus I Spinat I Mais I Jungzwiebel I Nori  
chicken breast I egg I bamboo I spinach I corn I spring onion I nori
- Spicy Miso Karaage Ramen** <sup>ACFGN</sup> 15.8 €  
Karaage I Ei I Bambus I Spinat I Mais I Nori I Jungzwiebel  
crispy chicken I egg I bamboo I spinach I corn I nori I spring onion
- Gyuniku Ramen** <sup>ACDFNT</sup> 15.8 €  
Beef Cha-Shu I Ei I Bambus I Mais I Spinat I Nori I Jungzwiebel  
beef cha-shu I egg I bamboo I corn I spinach I nori I spring onion
- Tofu Yasai Ramen** <sup>ACFLN</sup> 13.8 €  
Tofu I Ei I Bambus I Kräuterseitling I Spinat I Mais I Nori  
tofu I egg I bamboo I king oyster mushrooms I spinach  
corn I spring onion
- Spicy Miso Korokke Ramen** <sup>ACFGLN</sup> 14.8 €  
Korokke I Ei I Bambus I Mais I Spinat I Nori I Jungzwiebel  
korokke I egg I bamboo I corn I spinach I nori I spring onion
- Tan Tan Ramen** <sup>ACFGLN</sup> 15.8 €  
Faschiertes I Bambus I Mais I Ei I Spinat I Nori I Jungzwiebel  
tan tan beef I bamboo I corn I egg I nori I spring onion
- Ebi Tempura Ramen** <sup>ABCFLN</sup> 15.8 €  
Ebi Tempura I Bambus I Mais I Ei I Spinat I Nori I Jungzwiebel  
ebi tempura I bamboo I corn I egg I spinach I nori I spring onion



# SALATE



- Edamame** <sup>FU</sup> 5.0 €  
jap. soybeans with salt
- Wakame** <sup>N</sup> 5.0 €  
jap. seaweed salad
- Kimchi** <sup>DF</sup> 5.0 €  
pickled chinese cabbage
- Tsukemono** <sup>NU</sup> 5.0 €  
jap. pickled cucumber



# BAO BUNS

- Bulgogi (beef)** <sup>AFN</sup> 5.8 €
- Crispy Duck** <sup>AFN</sup> 5.8 €
- Tasty Tofu** <sup>AFU</sup> 5.8 €



## TOPPINGS

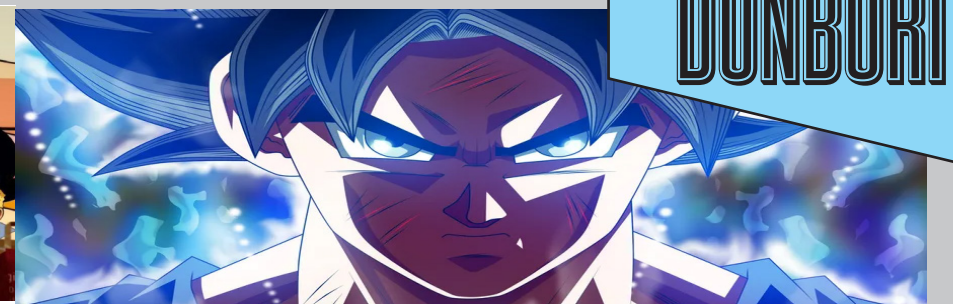
- Aburi Beef Cha Shu beef 4.0 €
- Tori chicken 3.0 €
- Karaage crispy chicken 3.0 €
- Tan Tan Beef 3.5 €
- Eringi mushrooms 2.0 €
- Tofu tofu 1.5 €
- Eringi mushrooms 2.0 €
- Menma bamboo 1.5 €
- Nori seaweed 1.0 €
- Kae-Dama extra Portion Nudeln 2.8 €

## ALLERGENE

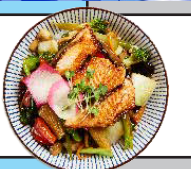
- A - Glutenhaltiges Getreide
- B - Krebstiere
- C - Eier
- D - Fische
- E - Erdnüsse
- F - Soja
- G - Milch
- H - Schalenfrüchte
- L - Sellerie
- M - Senf
- N - Sesam
- O - Schwefeldioxid
- P - Lupinen
- R - Weichtiere
- vegetarisch
- scharf

Geme erhalten Sie weitere Informationen über Allergene von unserem Servicepersonal.  
Alle Speisen inkl. MwSt. Kein Alkohol an Jugendliche.

# DONBURI

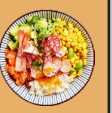


- Sake Aburi Don** <sup>BO</sup> 14.8 €  
Aburi Lachs I Saisongemüse I Reis I Teriyaki Sauce  
grilled salmon I saisonale vegetables I rice I teriyaki
- Gongbao Chicken** <sup>EFO</sup> 13.8 €  
Hühnerbrust I Gemüse I Erdnüsse I Reis  
chicken breast I vegetabels I peanuts I rice
- Kenko Tofu** <sup>AF</sup> 13.8 €  
Tofu I Gemüse I Reis I 6 Stk Avocado Maki  
tofu I vegetables I rice I 6pcs avocado rolls
- Bulgogi** <sup>AFN</sup> 14.8 €  
mariniertes Rindfleisch I Sojabohnensprossen I Reis  
marinated beef I soy beans I rice
- Udon Sake** <sup>AFO</sup> 14.8 €  
Aburi Lachs I Udon Nudeln I Gemüse I Teriyaki  
grilled salmon I udon I vegetables I teriyaki
- Udon Renkon** <sup>AFO</sup> 12.8 €  
Udon Nudeln I Gemüse  
udon I vegetables



# POKÉ BOWL

- Sake Bowl** <sup>BDFMNR</sup> 12.8 €  
with salmon, avocado, corn, caviar, edamame & homemade peanut-truffle sauce
- Veggie Bowl** <sup>FMN</sup> 12.8 €  
with edamame, wakame, corn, avocado & homemade peanut-truffle sauce
- Spicy Tuna Bowl** <sup>CDFMN</sup> 13.8 €  
with Tuna, avocado, edamame, corn, tomato & homemade spicy mayo sauce



# SWEETS



- Apple Gyoza** <sup>A</sup> 5.8 €  
(5pcs) dumplings with apple I strawberry sauce
- Matcha Milchreis** <sup>CGU</sup> 6.5 €  
matcha rice pudding with a caramel crust
- Mochi - Klebreiskuchen** <sup>FG</sup> 4.8 €  
sticky rice cake with azuki bean paste, whipped cream
- Dorayaki** <sup>AFG</sup> 4.5 €  
jap. pancake with matcha flavor, whipped cream





# ROLLS



**Dragon Roll** ADFN **12.8 €**  
(8pcs) ebi tempura | avocado | flambeed eel | unagi sauce

**California Roll** BCFMN **13.8 €**  
(10pcs) shrimps | avocado | surimi | masago | spicy mayo

**Geisha Roll** CDFMN **14.9 €**  
(8pcs) salmon tempura | avocado | tobiko | spicy mayo

**Surf & Turf Roll** ACDFMN **14.9 €**  
(8pcs) beef carpaccio | ebi tempura | avocado | truffle mayo

**MOST POPULAR**

**Temaya Roll** ACDFMN **12.8 €**  
(8pcs) ebi tempura | avocado | salmon | masago | wasabi mayo

**Spicy Salmon Roll** BCDFGHP **14.5 €**  
(8pcs) salmon tartare | avocado | cucumber | chili Mayo

**Tempura Roll** (crunchy) ABDNL **14.9 €**  
(10pcs) shrimps | avocado | surimi | cucumber | Unagi sauce

**Passion Roll** ADHFG **16.8 €**  
(8pcs) salmon tempura | salad | smoked salmon | black caviar

**Creamy Jam Roll** ACDFGMN **14.8 €**  
(8pcs) ebi tempura | avocado | philadelphia cream | jam

**Sake Maki** (6pcs salmon) **5.5 €**

**Mikado Roll** EHN **10.8 €**  
(8pcs) avocado, hazelnut, sesame

**Sweet Twinny** CMN **14.8 €**  
(10pcs) avocado, cucumber, sweet potato, mango sauce

**Avocado Maki** (6pcs) **5.0 €**

**Kappa Maki** (6pcs cucumber) **4.0 €**



# SUSHI & CO

**SHIN YU** ABDFHPR **55.0 €**

(Variation for two) - preparation time 20min

4 Sashimi | 4 Salmon | 4 Umami | 2 Shrimps  
4 Temaya rolls | 4 Dragon rolls | 8 Spicy Salmon rolls



Futatsu Set



**Hitosu** BD **11.8 €**  
2 salmon | 1 shrimps | 1 tuni nigiri  
3 avocado | 3 salmon rolls

**Futatsu** BD **15.8 €**  
2 salmon | 2 tuna | 2 shrimps | 2 eel  
3 avocado | 3 salmon rolls

**Sake Nigiri Set** BD **14.8 €**  
(8pcs) salmon nigiri

**Sake Maguro Set** BD **16.8 €**  
(4pcs) salmon & (4pcs) tuna nigiri

**Umami Nigiri Set** BDN **15.8 €**  
(8pcs) flambeed salmon | homemade sauce

**Yume Umami Set** BCMO **16.8 €**  
(6pcs) flambeed salmon with lime | tobiko | spicy mayo  
(6pcs) avocado rolls

**Sake Sashimi** BD **17.9 €**  
(9pcs) salmon sashimi



Yume Umami Set

# SAKE

Reiswein

**OZEKI SAKE** **€ 8.0**  
Junmai Sake | 0.15l | 14.5% vol - Geschmack: leicht, trocken

**YUKI** **€ 9.9**  
Junmai Ginjo Sake | 0.15l | 16% vol - Geschmack: klar, seidig

**KARATANBA OZEKI** **€ 22.0**  
Honjoza Sake | 300ml | 15.4% vol - Geschmack: klar, trocken

# WEIN

**Grüner Veltliner** **1.8l € 4.2 Fl. € 25.0**  
Ried Goldberg 2017 | trocken | 12.5% vol

**Gelber Muskateller** **1.8l € 4.5 Fl. € 29.0**  
NÖ 2018 | halbtrocken | 11.5% vol

**Saugvinon Blanc** **1.8l € 4.5 Fl. € 29.0**  
NÖ 2018 | trocken | 12.5% vol

**Zweigelt** **1.8l € 4.5 Fl. € 25.0**  
NÖ 2015 | trocken | 12.5% vol

# HOMEMADE DRINKS



**Eistee** **€ 5.9**  
0.5l Schwarztee | Zitrone | Honig

**Lychee Love** **€ 5.9**  
0.5l Lychee- & Cranberrysaft | Soda

**Passionfruit** **€ 6.0**  
0.5l Maracuja | Soda

**Yuzu Lemonade** **€ 6.5**  
0.5l Yuzu Sirup | Soda

**Mango Calpis** **€ 5.9**  
0.5l Mangosaft | Calpis | Soda

# SOFTDRINKS

**Coca Cola** Original | Zero **0.33l € 3.6**

**Fritzkola** Original | Zero | Rhaberber **0.33l € 3.9**

**Römerquelle** Still | Prickelnd **0.33l € 3.2 0.75l € 5.8**

**Apfelsaft** gespritzt **0.25l € 2.8 0.50l € 3.8**

**Lychee- | Mango** gespritzt **0.25l € 2.9 0.50l € 3.9**

**Soda** **0.25l € 2.1 0.50l € 3.3**

**Soda mit\*** **0.25l € 2.5 0.50l € 3.8**

Zitrone | Himbeer | Holunder | Calpis \*Jugendgetränk

**Leitungswasser** tap water **0.50l € 0.5**

# TEA

**Jasmin | Green Tea** **€ 4.6**

**Ingwer Lemon** **€ 4.6**

**Genmai Cha** Ricetea **€ 4.6**

**Tomo Cha** **€ 4.9**

Kandiszucker, Goji, Jujube, Chrysantheme, Rosinen, Malva, Nuss, Bocks Dorn

# SPRITZER

**Weiß | Rot** gespritzt **€ 4.2**

**Hugo** **€ 6.0**

Holundersirup | Prosecco | Soda | Minz

**Aperol** **€ 6.0**

Aperol | Prosecco | Soda | Orange

**Yuzu** **€ 6.8**

Yuzu Sirup | Prosecco | Soda

**Lillet Wildberry** **€ 6.8**

Wildberry | Soda | Lillet | Früchte

**Lychee Fizz** **€ 9.5**

Lychee | Gin | Soda

**Haku Vodka Wildberry** **€ 9.5**

Vodka | Wildberry | Limette

# BIER

**Gösser vom Fass**

0.33l **€ 4.2**

0.50l **€ 5.2**

**Kirin** 0.33l **€ 4.9**

## EBI & FRIENDS PLATTE

(Variation for 3-4) only by pre-order

**79 €** ABDFHP

bunt gemischte Sushi & Maki Platte  
auf besondere Wünsche gehen wir gerne ein

Catering Anfragen unter:  
mini06@ebi-family.at

